



COMUNE DI SALERNO

PROVINCIA DI SALERNO

Piano Attuativo del Comparto 34 Sub 2

Realizzazione di un edificio prevalentemente residenziale
in Via degli Uffici Finanziari

PROGETTO ESECUTIVO

Stato di Fatto

Rilievo topografico



I committenti:

sig. Pio Zoccola

sig. Pietro Zoccola

I progettisti:

dott. arch. Antonio Citro

dott. ing. Alfonso Pecoraro

Tavola

IN.SF.06

Scala
Varie

Data
Luglio 2019

Formato

A4/A3

Misure

metri

Revisione

01

Data

Luglio 2019

Argomento

Integra e
sostituisci

Sigla

/

Questo documento è di proprietà esclusiva. E' proibita la riproduzione anche parziale e la cessione a terzi senza autorizzazione.

aduestudio

VIA SAN GIOVANNI BATTISTA N. 5 - 84086- ROCCAPIEMONTE (SA) - TEL./FAX 081/0836764



LIBRETTO DELLE COORDINATE

Punto	Est	Nord	Quota	Commento
1	0.000	0.000	6.037	
2	-6.292	-6.115	5.862	ACC
3	-8.916	-8.879	5.790	ACC
4	-20.592	-21.805	5.589	CAD
5	-21.177	-22.919	5.582	REC
6	-22.147	-23.926	5.535	REC
7	-26.996	-29.026	5.446	REC
8	-34.026	-35.764	5.287	CAD
9	-36.741	-39.202	5.281	REC
10	-40.492	-43.282	5.223	REC
11	-49.963	-52.722	5.145	CAD
12	-53.659	-57.130	5.137	REC
13	-68.122	-72.101	5.027	CAD
14	-79.247	-84.566	4.832	REC
15	-86.098	-91.794	4.779	CAD
16	-93.074	-99.560	4.746	REC
17	-95.677	-102.278	4.761	REC
18	-104.091	-110.857	4.750	CAD
19	-105.162	-112.358	4.724	REC
20	-105.104	-115.965	4.730	REC
21	-110.850	-121.992	4.664	REC
22	-114.311	-122.072	4.760	REC
23	-120.172	-128.345	4.774	REC
24	-122.155	-129.989	4.732	CAD
25	-133.191	-142.166	4.718	REC
26	-142.348	-151.934	4.676	REC
27	-156.985	-167.632	4.490	REC
28	-163.515	-174.631	4.458	REC
29	-178.820	-176.004	4.638	REC
30	-181.191	-173.652	5.009	REC
31	-173.835	-165.882	5.160	REC
32	-170.460	-162.282	4.937	REC
33	-170.567	-162.191	4.800	REC
34	-167.874	-163.418	4.602	REC
35	-163.515	-161.749	4.544	MARC
36	-157.120	-155.430	4.456	CAD
37	-154.715	-158.114	4.587	FOGN
38	-152.267	-147.458	4.790	REC
39	-151.168	-148.449	4.780	MARC
40	-151.137	-148.489	4.683	MARC
41	-138.463	-135.178	4.534	CAD
42	-120.234	-121.425	4.736	FOGN
43	-114.618	-118.106	4.756	TOMB
44	-119.757	-115.885	4.752	TOMB

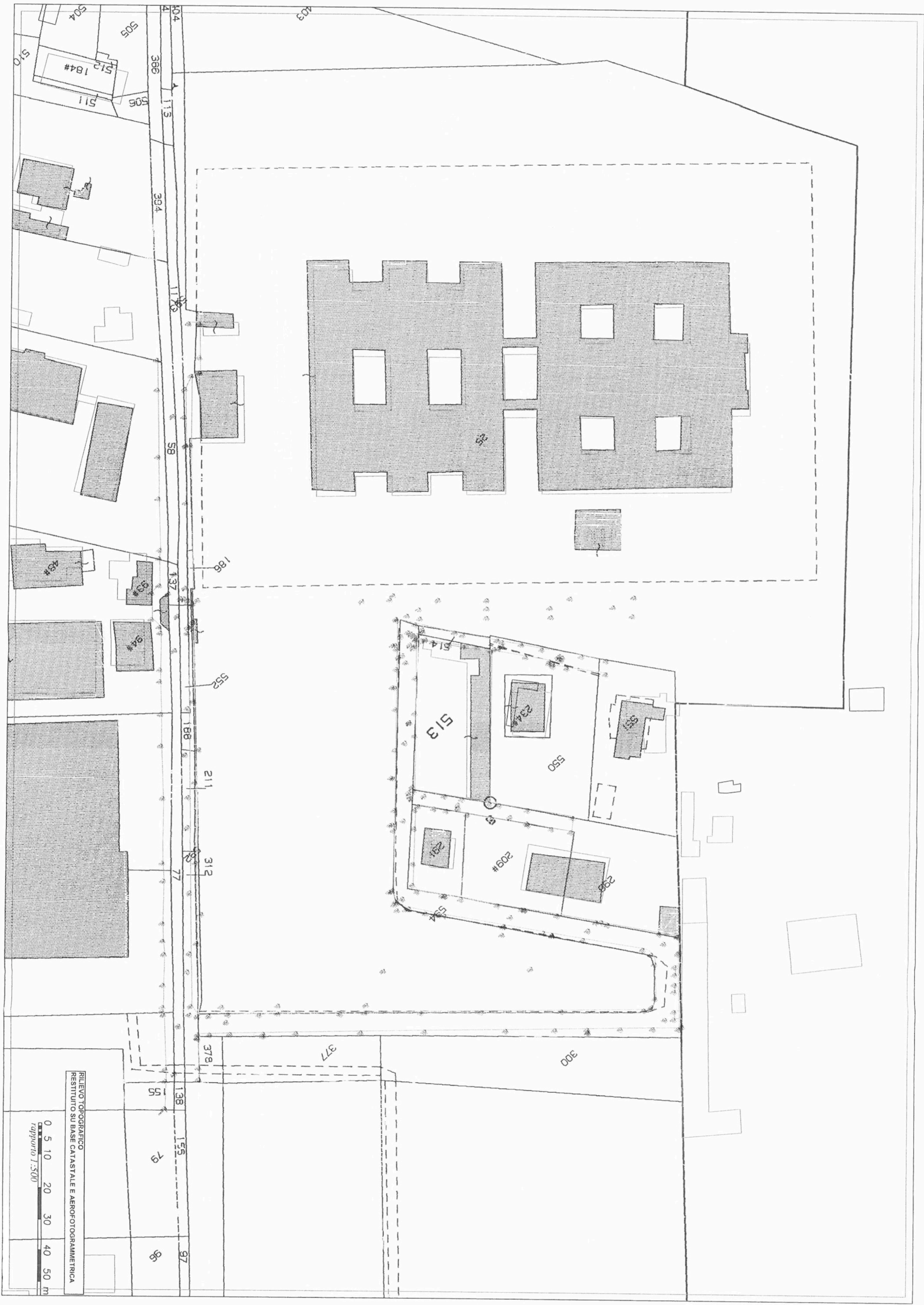
45	-117.065	-113.533	4.772	TOMB
46	-116.363	-114.330	4.784	TOMB
47	-111.686	-110.989	4.827	FOGN
48	-103.331	-103.579	4.836	FOGN
49	-117.609	-112.405	4.814	MARC
50	-117.808	-110.492	4.786	MARC
51	-119.830	-110.268	4.857	FOGN
52	-157.231	-74.054	4.729	MARC
53	-175.004	-57.538	4.693	MARC
54	-186.198	-46.690	4.673	CAD
55	-205.768	-28.818	4.686	STR
56	-220.781	-15.001	4.686	STR
57	-216.273	-10.975	4.790	STR
58	-213.803	-17.368	4.770	STR
59	-197.281	-28.667	4.824	STR
60	-199.083	-31.010	4.759	STR
61	-182.244	-42.679	4.813	STR
62	-184.341	-44.768	4.764	STR
63	-166.689	-57.214	4.810	STR
64	-168.468	-59.574	4.766	STR
65	-164.346	-60.730	4.762	STR
66	-161.068	-62.404	4.735	REC
67	-171.602	-46.246	4.898	REC
68	-179.672	-35.008	4.976	REC
69	-184.233	-28.710	5.016	REC
70	-165.589	-68.443	5.189	REC
71	-163.904	-68.198	4.770	REC
72	-154.392	-56.858	4.819	STR
73	-155.065	-56.390	4.883	REC
74	-145.432	-46.483	4.927	REC
75	-144.977	-47.161	4.824	REC
76	-125.238	-26.121	5.086	REC
77	-124.878	-26.703	5.016	REC
78	-114.890	-15.611	5.239	REC
79	-114.285	-16.046	5.131	REC
80	-99.205	-0.557	5.222	REC
81	-99.938	-0.131	5.419	REC
82	-97.542	3.242	5.247	REC
83	-98.582	2.969	5.507	REC
84	-97.001	5.276	5.285	REC
85	-99.199	7.124	5.403	REC
86	-102.869	12.296	5.447	REC
87	-105.374	15.566	5.536	REC
88	-115.931	33.988	5.539	REC
89	-117.926	32.527	5.590	REC
90	-127.222	45.265	5.615	REC
91	-127.318	45.154	5.653	REC
92	-127.392	45.032	6.243	REC

93	-115.073	48.068	5.723	PARK
94	-80.630	15.978	5.404	PARK
95	-69.164	20.133	5.360	PARK
96	-67.066	21.646	5.510	REC
97	-46.998	2.882	5.462	REC
98	-48.802	0.979	5.435	REC
99	-35.668	-11.101	5.419	REC
100	-35.432	-7.822	5.470	REC
101	-51.386	-36.809	5.274	REC
102	-87.211	-75.301	4.949	REC
103	-113.983	-106.296	4.703	REC
104	-113.926	-106.243	4.851	REC
105	-112.573	-105.607	4.856	TOMB
106	-111.698	-106.126	4.719	MARC
107	-110.107	-104.891	4.707	CAD
108	-93.540	-87.341	4.851	CAD
109	-96.365	-87.515	4.983	REC
110	-78.978	-68.735	5.190	REC
111	-82.860	-77.176	4.967	ENEL
112	-74.178	-66.756	4.994	CAD
113	-67.459	-59.951	5.078	TOMB
114	-61.326	-49.832	5.372	REC
115	-53.462	-44.229	5.231	MARC
116	-43.925	-31.117	5.538	REC
117	-40.021	-30.324	5.332	CAD
118	-35.589	-26.819	5.411	STP
119	-26.626	-16.235	5.460	CAD
120	-28.829	-18.000	5.520	MARC
121	-28.139	-14.186	5.561	MARC
122	-28.141	-14.182	5.557	MARC
123	-30.819	-11.703	5.445	CANC
124	-42.511	-0.908	5.401	REC
125	-61.227	16.617	5.394	REC
126	-80.006	34.049	5.443	REC
127	-94.074	47.145	5.537	REC
128	-112.818	64.669	5.631	REC
129	-131.970	82.502	5.620	REC
130	-134.584	83.468	5.632	REC
131	-137.242	82.249	5.571	REC
132	-144.679	74.235	5.484	REC
133	-145.955	71.347	5.514	REC
134	-145.069	68.323	5.494	REC
135	-133.516	52.923	5.149	REC
136	-125.914	42.673	5.140	REC
137	-118.263	32.397	5.051	REC
138	-106.764	16.972	4.936	REC
139	-100.145	7.478	4.957	REC
140	-98.677	3.571	4.913	REC

141	-100.401	-0.342	4.857	REC
142	-113.893	-14.049	4.726	REC
143	-118.407	-18.605	4.711	REC
144	-131.874	-32.327	4.547	REC
145	-140.855	-41.465	4.452	REC
146	-149.861	-50.611	4.378	REC
147	-154.352	-55.207	4.332	REC
148	-160.949	-61.907	4.369	REC
149	-164.298	-56.847	4.353	REC
150	-172.884	-43.838	4.393	REC
151	-180.409	-33.467	4.384	REC
152	-187.929	-23.080	4.415	REC
153	-195.471	-12.714	4.413	REC
154	-200.201	-6.214	4.430	REC
155	-197.068	-3.271	4.443	REC
156	-189.403	-13.164	4.396	REC
157	-186.649	-16.725	4.427	REC
158	-187.183	-17.140	4.429	REC
159	-186.402	-18.168	4.443	REC
160	-186.939	-18.550	4.421	REC
161	-182.360	-24.749	4.390	REC
162	-175.719	-33.783	4.585	SF
163	-170.326	-40.986	4.447	SF
164	-167.650	-44.562	4.400	CANC
165	-164.364	-48.820	4.348	REC
166	-162.185	-51.634	4.350	TETT
167	-161.107	-53.196	4.304	REC
168	-160.824	-53.132	3.904	REC
169	-159.642	-51.971	3.909	REC
170	-152.287	-44.318	4.374	REC
171	-144.439	-36.285	4.444	REC
172	-139.518	-31.256	4.457	REC
173	-127.246	-18.674	4.620	REC
174	-133.183	-10.737	4.729	REC
175	-136.570	-6.141	4.805	REC
176	-141.848	0.879	4.775	REC
177	-143.792	3.468	4.936	REC
178	-149.258	10.843	4.519	REC
179	-158.013	22.480	4.705	REC
180	-154.463	25.417	4.675	REC
181	-150.644	20.425	4.621	REC
182	-146.136	14.301	4.635	REC
183	-139.159	4.990	4.675	REC
184	-134.415	-1.440	4.716	REC
185	-130.338	-6.911	4.673	REC
186	-127.970	-10.106	4.775	REC
187	-124.877	-14.220	4.738	REC
188	-123.251	-14.116	4.807	REC

189	-119.055	-9.973	4.855	REC
190	-110.836	-1.943	4.910	REC
191	-106.022	2.815	4.790	REC
192	-105.650	5.428	4.921	REC
193	-110.537	11.919	4.997	REC
194	-111.150	12.637	4.961	REC
195	-111.126	12.595	5.249	REC
196	-114.205	16.847	5.116	REC
197	-121.320	26.242	5.063	REC
198	-125.937	32.526	5.207	REC
199	-126.582	33.357	5.165	REC
200	-126.518	33.218	5.000	REC
201	-132.820	41.802	5.302	REC
202	-140.330	51.847	5.399	REC
203	-141.545	52.975	5.254	REC
204	-142.475	54.901	5.388	REC
205	-152.359	68.256	5.521	REC
206	-155.921	72.888	5.507	REC
207	-156.073	72.917	5.701	REC
208	-152.170	76.975	5.697	REC
209	-153.171	76.854	4.422	REC
210	-148.751	79.300	5.463	REC
211	-147.044	81.027	5.473	REC
212	-144.777	83.342	5.535	REC
213	-143.184	84.782	5.591	REC
214	-138.570	89.400	5.554	REC
215	-136.747	91.173	5.538	REC
216	-135.759	94.460	5.510	REC
217	-137.053	94.659	5.723	REC
218	-129.918	88.876	5.605	REC
219	-122.373	81.790	5.556	REC
220	-114.623	74.660	5.539	REC
221	-114.227	75.372	4.268	REC
222	-114.043	75.437	4.704	REC
223	-107.032	67.635	5.491	REC
224	-95.564	56.967	5.481	REC
225	-76.626	39.256	5.426	REC
226	-61.771	25.419	5.403	REC
227	-46.772	11.395	5.373	REC
228	-39.118	4.352	5.341	REC
229	-38.558	4.885	4.144	REC
230	-31.473	-2.772	5.330	REC
231	-26.713	-7.124	5.370	REC
232	-23.989	-9.744	5.585	REC
233	-23.136	-9.125	5.654	CAD
234	-23.109	-8.809	5.658	STR
235	-16.776	-1.858	5.769	STR
236	-14.291	0.758	5.851	STR

237	-9.994	-5.949	5.814	TOMB
238	-21.584	-15.997	5.600	ASSE
239	-33.322	-6.404	5.367	ASSE
240	-134.735	89.239	5.583	CAD
241	-151.274	71.488	5.414	CAD
242	-136.665	51.880	5.243	CAD
243	-121.724	31.771	5.118	CAD
244	-100.794	3.791	4.919	CAD
245	-118.347	-14.190	4.715	CAD
246	-127.819	-19.986	4.680	TOMB
247	-125.849	-19.512	4.635	TOMB
248	-125.212	-18.581	4.653	TOMB
249	-125.045	-17.541	4.647	TOMB
250	-128.522	-15.343	4.734	TOMB
251	-134.428	-5.794	4.747	TOMB
252	-133.723	-4.879	4.696	TOMB
253	-143.762	8.551	4.672	TOMB
254	-146.203	13.670	4.579	CAD
255	-135.736	-31.779	4.492	CAD
256	-141.280	-35.372	4.455	TOMB
257	-153.540	-49.942	4.333	CBD
258	-160.852	-56.621	4.305	CBD
259	-178.232	-32.789	4.438	CBD
260	-190.011	-16.328	4.404	CBD
261	-190.786	-16.655	4.410	TOMB
262	-190.534	-17.613	4.412	TOMB
263	-190.002	-17.650	4.409	TOMB
264	-179.526	-32.603	4.456	TOMB
265	-177.063	-33.698	4.431	TOMB
266	-163.292	-51.079	4.352	TOMB
267	-164.424	-53.429	4.342	TOMB
268	-164.816	-54.153	4.357	TOMB
269	-162.323	-53.890	4.347	TOMB
270	-161.480	-54.677	4.354	TOMB
271	-161.296	-55.708	4.322	TOMB
272	-158.345	-57.276	4.332	TOMB
273	-158.529	-53.336	4.316	TOMB
274	-158.597	-51.910	4.336	TOMB
275	-154.408	-52.432	4.308	TOMB
276	-153.160	-52.840	4.326	TOMB
277	-141.208	-35.518	4.430	TOMB
278	-309.367	-321.890	3.594	TOMB
279	-336.001	-338.456	4.802	TOMB
280	-5334.334	3805.559	3.094	TOMB



Rilievo topografico
restituito su base Megis catastale

The map displays a large building complex with several rooms and areas labeled with numbers. The main building has a central courtyard area labeled 513. Other labeled areas include 514, 550, 551, 552, 553, 554, 555, 556, 557, 558, 559, 560, 561, 562, 563, 564, 565, 566, 567, 568, 569, 570, 571, 572, 573, 574, 575, 576, 577, 578, 579, 580, 581, 582, 583, 584, 585, 586, 587, 588, 589, 590, 591, 592, 593, 594, 595, 596, 597, 598, 599, 600. The map also shows a scale bar (0 to 50 meters) and a north arrow.



Rilievo topografico restituito su aerofotogrammetria

